

BMW single flywheel tap repair with speed-sleeve

Speed-sleeves can be obtained through Ulli's motor-laden, he has/sells separate versions for R25 (0-3) and R26/27 (tap thickness differ)



Does your flywheel tap look like this? grooved!
This could be the reason for oil-leakage



You need to install a speed-sleeve;
a thin metal sleeve with crimp fit.



Start by cooling down your flywheel in the freezer
Heat could damage the sleeve...



Clean tap with alcohol (to avoid condensation)
and add a drop or two of Loctite adhesive



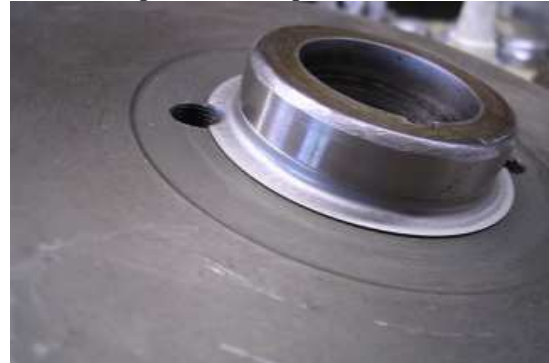
Install Speed-sleeve with the in the kit supplied
done guiding tool and a hammer



Sleeve mounted, but a bit of work needs to be
A bit too long and mounting holes need rework



Using a set of files and sandpaper;
be carefull not to damage the running surface.



Done !